

FREE AIRFARE
LIMITED TIME OFFER. CALL FOR DETAILS.



11 DAYS • 22 MEALS • LISBON > PORTO

PORTUGAL AND THE DOURO RIVER CRUISE

Tour Dates: July 21-31, 2027

A symbol of Portugal's growth, the Douro River has long been the nation's lifeline. Spend two nights in Lisbon, exploring the city's iconic sights. On the way to Porto, visit Fátima and Coimbra. Cruise through Portugal's enchanting countryside along the dramatic Douro. Terraced vineyards line the banks, historic landmarks dot the hills, and charming towns await discovery. From Spain's walled Salamanca to Portugal's baroque Lamego, experience a fresh perspective of Europe as you journey along one of its most scenic rivers.





DAY 1 Depart the USA

Depart the USA on your overnight flight to Lisbon, Portugal.

DAY 2 Lisbon, Portugal

Upon arrival, you'll be met by a representative of Emerald Cruises and transferred to your hotel. The remainder of the day is at your leisure to explore Lisbon. This evening, join your fellow travelers for an included dinner. [Meal: D](#)

DAY 3 Lisbon

After breakfast, an included tour highlights the famous sites of the city. During a panoramic coach tour, see 'Monument to the Discoveries,' and Belem Tower, a UNESCO World Heritage Site. Visit Jerónimos Monastery and discover the unique architecture and history. Enjoy a free afternoon to shop, dine and experience this cosmopolitan city on your own. [Meal: B](#)



DAY 4 Fátima – Coimbra – Porto

Depart Lisbon by coach and journey to the ship in Porto. En route, visit Fátima, home to the Sanctuary of Fátima, an important Catholic pilgrimage site. The city's fame originates from the apparitions of Our Lady of the Rosary that appeared to three shepherd children in the nearby fields. Continue to Coimbra and its famous university before arriving in Porto to embark your Emerald Star-Ship, home for the next seven nights. [Meals: B, D](#)

DAY 5 Porto – Pinhão

Today is a day of sailing through the twists and turns of the Douro Valley. Designated a UNESCO World Heritage Site, this area is sparsely populated by quaint villages, sun-drenched vineyards and small farms. Later today, arrive in the village of Pinhão, perfectly situated on a river bend surrounded by terraced hillsides that produce some of the world's best Port wine. Tonight, enjoy a welcome reception and dinner. [Meals: B, L, D](#)

[EmeraldPLUS](#): Portuguese Cooking Demonstration

DAY 6 Pinhão – Vega de Terrón

Begin the day with a visit to the beautiful 18th-century estate of Quinta do Tedo Vineyard with spectacular views of the Douro Valley. Learn about wine production, its importance to the culture and economy, and enjoy a tasting of the local vintage. This afternoon, the ship sails for Vega de Terrón, gateway to Spain. [Meals: B, L, D](#)

[EmeraldACTIVE](#): Guided Walk through the Vineyards

[EmeraldACTIVE](#): Kayaking Experience in Pinhao

DAY 7 Salamanca, Spain

Today's excursion takes you to the UNESCO World Heritage Site of Salamanca, Spain. During the guided walking tour, see amazingly detailed and intricately carved buildings of the university and the House of Shells. Regal splendor abounds in the Plaza Mayor, the heartbeat of the city. You'll have free time for lunch and to explore independently before returning to the ship in Portugal. [Meals: B, D](#)

[EmeraldPLUS](#): Tuna Music Band in Salamanca

DAY 8 Pocinho / Régua, Portugal

An early afternoon arrival brings you to Pocinho. Disembark for an included visit to the medieval town of Castelo Rodrigo. Uncover the



Sanctuary of Our Lady of Remedies, Lamego

secrets of its fortress and perhaps try some typical local products. Return to the ship for lunch and relax on deck as the ship sails through idyllic surroundings on the way to Régua. **Meals: B, L, D**

EmeraldPLUS: Port Wine Cocktail Lesson

DiscoverMORE: Archaeological Tour on 4x4 at Coa Museum (extra expense)

DAY 9 Régua – Lamego

From Régua, journey by coach to the marvelous baroque village of Lamego, home to the Sanctuary of Our Lady of Remedies - one of the most important pilgrimage sites in Portugal. Visit the Sanctuary perched atop the hill, with its iconic 686-step granite staircase, decorated with the traditional Portuguese blue and white 'azulejos' tiles. This afternoon, experience a rural lunch at Quinta da Pacheca, one of the finest estates along the Douro River. Return to the ship in Régua after the excursion. This evening, enjoy local entertainment onboard. **Meals: B, L, D**

EmeraldPLUS: Lunch at a local Quinta

EmeraldPLUS: Mosaic Tile Painting Lesson

EmeraldACTIVE: Walk down the steps of Sanctuary of Our Lady of Remedies

DiscoverMORE: Visit to Mateus Manor House (extra expense)

DAY 10 Porto

Having traversed the Douro River, the ship returns to Porto - a city with an eclectic mix of modern and ancient architecture. An included tour highlights the sights from its scenic beauty to the historic landmarks of the Castelo da Foz and Castelo do Queijo. For those who wish to see the charms of Porto on foot, the Active walk through the town will bring you closer to the vibrant daily life of the locals. The remainder of the afternoon is at leisure in Porto. **Meals: B, L, D**

EmeraldPLUS: Cruise through Porto

EmeraldACTIVE: Guided Active Walk in Porto

DiscoverMORE: Visit to Quinta da Aveleda (extra expense)

DiscoverMORE: Guided E-Bike Tour to the Atlantic (extra expense)

DAY 11 Porto / USA

This morning, disembark your Emerald Star-Ship and bid a fond farewell to Portugal, filled with memories of this remarkable cruise along the 'River of Gold.' **Meal: B**

Itinerary and excursions are subject to change.

CRUISE AND HOTEL ACCOMMODATIONS

Days 2 and 3 - Sheraton, Lisbon, Portugal

Days 4 through 10 - Aboard the *MS Emerald Radiance* or *Emerald Nova*



EXCEPTIONAL INCLUSIONS

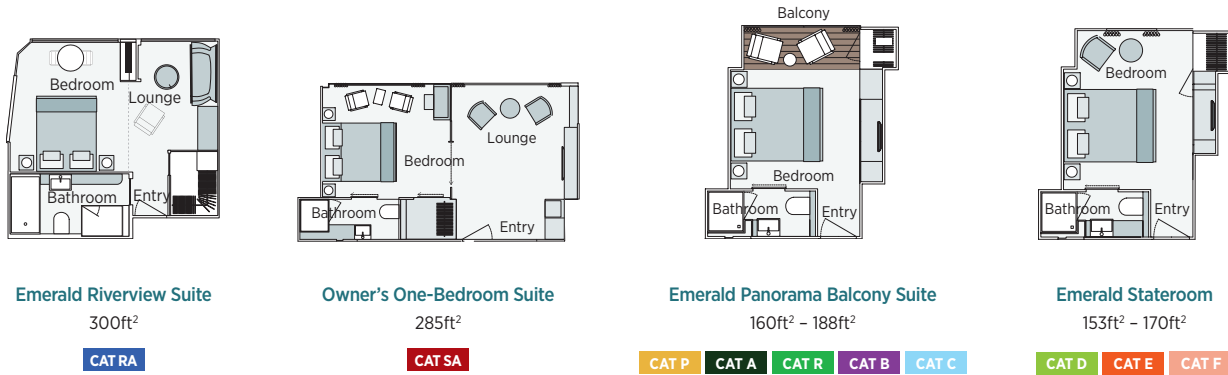
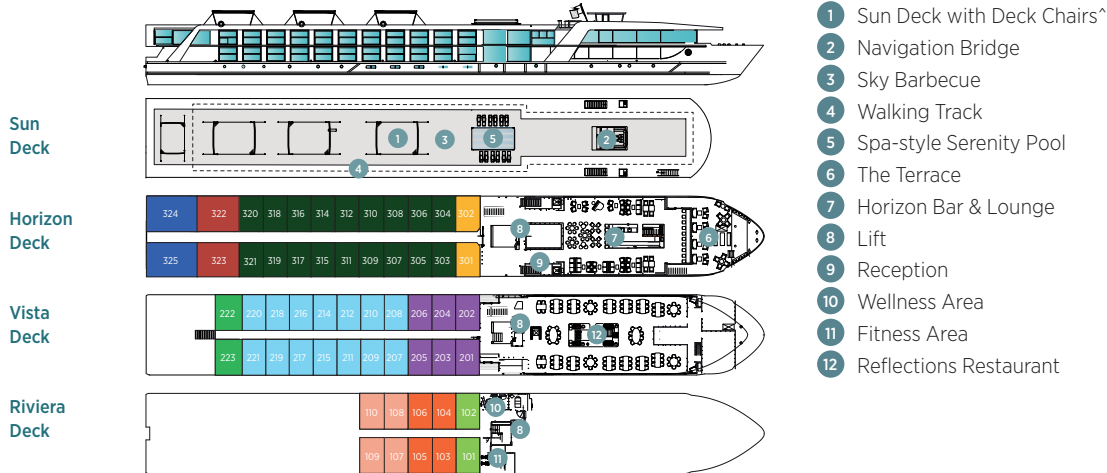
- 22 Meals: 9 breakfasts, 5 lunches and 8 dinners
- Airport transfers on tour dates when air is provided by Mayflower Cruises & Tours
- Visit two countries
- Two-night hotel stay and touring in Lisbon, Portugal before cruising
- Seven-night cruise on an Emerald Cruises Star-Ship
- First-class service by an English-speaking crew
- Onboard Activity Manager will support all EmeraldACTIVE excursions and host daily onboard wellness activities, games, classes and evening entertainment
- Shore excursions with English-speaking local guides
- All gratuities included
- Personal listening device for onboard excursions
- Many meals included onboard with a variety of international cuisine
- Complimentary regional wines, beer and soft drinks accompany onboard lunches and dinners
- Complimentary bottled water in your stateroom
- Complimentary WiFi onboard
- Variety of onboard evening entertainment



Porto, Portugal

EMERALD RADIANCE & EMERALD NOVA

Built: 2017 Cabins: 56 Guests: 112 Suites: 56 Length: 292 ft. Crew: 37



Important Information: The cabin and deck plans, sizes and photographs are an indication only and are subject to variation. * Due to safety, the Sun Deck will be closed when travelling under low bridges.

Tour Code 812PO 2027 Departure Date	RIVIERA DECK		VISTA DECK		HORIZON DECK					
	CAT E, D Emerald Stateroom		CAT C, B, R Panorama Balcony Suite		CAT A, P Panorama Balcony Suite		CAT SA Owner's One-Bedroom Suite		CAT RA Riverview Suite	
	PER PERSON TWIN	SINGLE ROOM	PER PERSON TWIN	SINGLE ROOM	PER PERSON TWIN	SINGLE ROOM	PER PERSON TWIN	SINGLE ROOM	PER PERSON TWIN	SINGLE ROOM
July 21	\$5,715	+ \$4,286	\$6,279	+ \$4,709	\$7,165	+ \$5,374	\$7,925	N/A	\$8,059	N/A

Pricing includes Cruise, Land Tour and Free Air from Harrisburg Airport (MDT) when deposited within promotion window.

Air itineraries may not be available until documents are received. Air seats are assigned by the airline for the entire group and may not be available until airport check-in. Seat changes can only be attempted at the airport and may not be possible. If specific seat assignments are vital to your reservation, we recommend booking air on your own rather than booking air with the group.

Passport required on this program

(a) The State Employees Recreation Association, its officers, directors, representatives and members, expressly disclaims all responsibility or liability of any nature whatsoever for loss, damage or injury to property or to the person due to any cause whatsoever, occurring during or attributable to the tour, or tours, described herein and purchaser/participant by his or her subscription to or participation in the travel opportunity, does release SERA from such liability or responsibility. Without limiting the foregoing, SERA is not and shall not become liable or responsible for accidents, loss detention, annoyance, delays and expenses arising from quarantine, strikes, force majeure, failure of any means of conveyance to arrive or depart as scheduled, disturbances, government restrictions or regulations, discontinuances or change in transit or hotel accommodations and/or services and other causes over which they have no control. The passage contract in use by the airlines concerned, when issued, shall constitute the sole contract between the airlines and the purchaser and/or participants of this tour. SERA is not responsible, and the Purchaser and/or participant waives all claim against SERA for all of the aforesaid conditions as well as loss or damage resulting from delays, cancellations or substitutions of equipment, financial conditions, or any act, omission, negligence, or any other faults by the travel agent, carriers, hotel or any other transportation or service providers or companies, their agents, servants, employees and subcontractors or other causes. In the event that, in the opinion of SERA, it becomes necessary or advisable for the comfort and/or well being of the passengers, or for any reason whatsoever, to alter the itinerary of this tour, including the airline and type of equipment, accommodations and/or service utilized, SERA reserves the right to do so at its sole discretion and without notice. SERA is a non-profit organization, comprised of volunteers, for the benefit of all Commonwealth employees, active or retired, their relatives and friends. It is solely responsible for its own affairs and completely independent of the Commonwealth of Pennsylvania State Government.

(b) Assistance: Tour participants requiring assistance or accommodation for disabilities should contact the travel agency to discuss your specific requirements and what accommodation is possible."

Travelers Protection Plan (TPP) for River Cruises – \$569 per person

This nonrefundable fee will provide a refund to you during the instance that you have to cancel your trip. The cancellation has to be for a covered reason (see Plan for details on coverage) and we have to be notified at least one day prior to departure. If you must leave the tour early due to personal illness or the illness or death of an immediate family member, TPP will provide a refund for any unused services after the departure of the tour. Other benefits include medical expenses for illness and injury, emergency transportation, 24 hour hot line and lost or stolen baggage assistance. Return air transportation is included ONLY if your air tickets are purchased through Mayflower Cruises & Tours. Please review the Plan for details on coverage. Should you choose not to purchase our TPP, the following per person cancellation charges will be assessed for all tours and optional excursion costs:

- 121 days or more prior to departure: Deposit Amount
- 120 days to day of departure: 100% of total tour
- No refund on unused portions of the tour



Exclusions: Mayflower Cruises & Tours reserves the right to alter its Refund and Cancellation Policy when a substantial amount of cancellation or postponement of travel is attributable to: conditions resulting from an act of God, natural or man-made disaster, fire, government action, civil disorder, war, hostilities between nations, or unavailability of transportation through no fault of Mayflower Cruises & Tours. Plan and benefits offered and administered by Trip Mate, Inc.

FOR RESERVATIONS OR INFORMATION CONTACT:

Dawn Decker Co-Travel Chair
ddecker@pa.gov Work: 717-787-6984

Angie Smith Co-Travel Chair
angsmith@pa.gov Work: 717-783-2253

RESERVATION FORM – PORTUGAL AND DOURO RIVER CRUISE



Tour: _____ Departure Date: _____

Group Name: _____ Group Number: _____

For Reservations Contact: _____

IMPORTANT: Please print your name **EXACTLY** as it appears on your **passport**. We require a copy of your passport at the time of initial reservation or no later than two (2) weeks after making your reservation. Name corrections, after final payment due date, or after tickets have been issued, will result in additional fees being assessed.

Today's Date: _____

YOUR INFORMATION: (Please print your name **EXACTLY** as it appears on your passport)

Salutation (Mr., Mrs., Rev): _____

First: _____ Middle: _____ Last: _____ Suffix: _____

Address: _____ City: _____ State: _____ Zip Code: _____

Phone: _____ Cell: _____ Email Address: _____

Passport Number: _____ Date of Issue (m/d/y): _____ Date of Expiration (m/d/y): _____

Place of Issue (Authority): _____ Nationality: _____ Global Entry/TSA # _____

Date of Birth (m/d/y): _____ Place of Birth: _____ Gender: Male Female

Passport photo page attached/included with reservation form.

EMERGENCY CONTACT: (Please provide contact information of person **NOT** traveling with you)

Name: _____ Relationship: _____

Cell Phone #: _____ Home Phone #: _____

AIR AND ROOMING INFORMATION:

Departure airport: _____ Mayflower Air Writing Own Air

Food Allergies or Special Dietary Requirements: Yes No

Are you bringing a Sleep Apnea Machine: Yes No

Are you bringing any Mobility Aids: Yes No

(If you checked YES to any of the above, you are required to fill out the corresponding information form.)

ROOM CATEGORY:

Single (Select one bed or two beds) **Twin** (two beds) **Double** (one bed) **Guaranteed Share***

*Mayflower's Guaranteed Share Program is available on the Riviera, Vista and Horizon Decks standard staterooms only.

STATEROOM CATEGORY:

Riviera Deck (CAT E) Riviera Deck (CAT D) Vista Deck (CAT C) Vista Deck (CAT B) Vista Deck (CAT R)

Horizon Deck (CAT A) Horizon Deck (CAT P) Owners Suite (CAT SA) Riverview Suite (CAT RA)

Requested Cabin #: _____ 1st Preference #: _____ 2nd Preference #: _____ 3rd Preference #: _____

We will make every effort to accommodate your preference of cabin category. All cabins are on a first come first reserve basis.

Rooming with: _____ **Please complete separate reservation form for traveling companion.**

PAYMENT INFORMATION:

By placing a deposit, you understand and accept the terms and conditions of Mayflower Cruises and Tours and Scenic Group. For details of the Scenic Group terms please visit <https://www.emeraldcrucises.com/terms-conditions>

Purchasing Travelers Protection Plan (TPP): Yes No

Cruise price up to \$5000: TPP \$ _____ Cruise price \$5001 and up: TPP \$ _____

Deposit Amount: \$ _____ + Travelers Protection Plan: \$ _____ = Total Amount Enclosed: \$ _____

Final Payment Due By: _____ Make Checks Payable To: _____

Mail Deposit To: _____ City: _____ State: _____ Zip Code: _____

Mail Final Payment To: _____ City: _____ State: _____ Zip Code: _____

CREDIT CARD INFORMATION:

If you would like to make your deposit by credit card, please provide the information to your group leader who will make your payment directly to Mayflower. VISA, MC, and Discover are accepted.

BOOKING CONDITIONS

2027 RIVER CRUISES

Payments:

All deposits and final payments can be made by check or credit card. We accept the following credit cards: Visa, MasterCard and Discover.

Prices Subject to Change:

We reserve the right to vary itineraries and prices and substitute facilities, hotels or events of equal or better quality if necessary.

Guaranteed Share Program for Single Travelers:

If you are traveling alone and would like a roommate for cost savings, let us know at the time of booking your reservation. Travelers must be non-smokers, cannot use a medical sleeping device or have specific needs like Handicapped room etc. to be eligible. Participants will be paired with another traveler of the same gender at the twin rate. If no roommate is available, you will get a single room at the twin rate. Guaranteed share reservations are available 180 days prior to tour departure. Guaranteed share reservations are only available on certain Cabin categories. Please call us for details.

Roommate Cancellation:

If you are booked as a "twin" and your roommate cancels their reservation, and you cannot find another roommate, you may either travel as a guaranteed share (see above) or travel as a single and pay the single supplement.

Health and Walking on Tour:

Some sites visited have limited motorcoach access and may involve considerable walking, stairs or inclines. Travelers should be in reasonably good health. Some programs include destinations in higher elevations that may have varying effects on individual travelers. Tour Managers and Coach Drivers cannot lift or assist travelers into transportation vehicles. Persons requiring assistance are required to be accompanied by a companion who is capable of and totally responsible for providing the assistance.

Revision Fees:

A fee of \$25 per person per transaction will be charged for any changes, revisions or alterations made to your reservation after confirmation.

Luggage Handling:

The tour cost includes portage for one average size suitcase. A charge of \$5.00 per hotel will be collected by the Tour Manager for each additional piece of luggage that you bring.

Travel Documents:

Your travel documents will be in your possession approximately 14 days prior to departure. Documents include tour itinerary, departure and arrival information and times, hotel and ship information, clothing suggestions, baggage tags, plus any helpful hints.

Mayflower Loyalty Program:

Earn \$150.00 travel credit for every River Cruise taken with Mayflower Cruises & Tours. No restrictions to the amount of credits an individual can acquire. Loyalty Credits can be applied to any reservation made within 16 months after the departure date of the tour they were earned on. Multiple credits can be used on a single tour. Credits are nontransferable but can be combined with Mayflower promotional savings. Some restrictions apply, call for details.

Smoke Free Environment:

All river cruise vessels have a no-smoking policy inside the vessel. There may be designated smoking areas outside on certain decks, and any smoking must be done in the designated areas only. While on the excursions, there is no smoking allowed on the motorcoach.

Travelers with Special Needs:

You must advise Mayflower at the time your booking is made of any disability requiring special attention. The special needs of our travelers will be accommodated with reasonable efforts to be made. Be aware that the Americans with Disabilities Act is applicable only within the United States and that accommodations for disabled travelers outside the United States may be more limited. If a traveler requires assistance,

we require that he/she be accompanied by a companion who is capable of and totally responsible for providing the assistance. Neither Mayflower nor Tour Operator's personnel, nor its suppliers, may lift or physically assist travelers. If a traveler thinks he/she might need assistance during a trip, he/she should call Mayflower to determine what assistance might reasonably be provided. If special arrangements are provided, and these arrangements add to the Tour Operator's cost, the Tour Member will be responsible to pay the additional costs. Special individual assistance to travelers with special needs for walking, dining or other routine activities cannot be provided. Travelers requesting a handicapped room cannot be booked with Guaranteed Share accommodations.

Membership:

Mayflower and the respective Tour Operator reserve the right to withhold tour membership, or to require any traveler to leave a tour at any time, when such action is determined by Mayflower or the respective Tour Operator to be in the best interests of the traveler or the tour group. Children must be at least 12 years of age and accompanied by a guardian at all times.

Force Majeure:

Except where otherwise expressly stated in these terms and conditions we cannot accept liability or pay any compensation where the performance or prompt performance of our obligations under our contract with you is prevented or affected by or you otherwise suffer any damage, loss or expense of any nature as a result of Force Majeure. "Force Majeure" means any event which we or the supplier of the services in question could not, even with all due care, foresee or avoid.

Responsibility:

These tour programs are operated by (1) Scenic Ship Services AG, Switzerland, for Rhine-Main-Danube River Cruises, (2) by Scenic Ship Services SAS, France, for France River Cruises, and by (3) Waratah Unipessoal LDA, Portugal, for Portuguese River Cruises, (1) - (3) each a "Tour Operator". In common with other companies, Mayflower acts only as a sales agent for Tour Members in arranging room accommodations, transportation, sightseeing, admissions and restaurants. Mayflower reserves the right in its sole discretion to make changes in the itinerary and is not responsible for expenses, loss of time, money or other occurrence resulting from a change of tour scheduling made for Tour Members. The Tour Operator reserves the right to accept, decline or retain any person as a member of the tour, and is not responsible for any losses or damages of personal property, or for injuries, expenses or damages incurred by any Tour Member.

Airline Security Measures:

The Transportation Security Administration requires that travelers provide their name exactly to their airline as it appears on their passport to be used while traveling, along with their date of birth and gender when making reservations to fly from the U.S. When making your flight reservations through Mayflower Cruises & Tours, you will be asked for this information by our staff. Due to airline security measures, your passport must match your airline ticket name and your tour reservation name or you may be denied aircraft boarding.

Passport & Visas:

Each U.S. citizen must have a valid passport. Expiration date of passport should be at least six months after the return date of the tour. If you don't have a passport, call our office and we'll tell you how to apply for one. Some countries require visas for entry by U.S. citizens. We will send instructions for visa applications if a visa is required for your tour. Holders of non-U.S. passports should contact their nearest consulate and inquire about the necessary passport or visa documentation required for entry into the countries visited. Visa fees and cost of obtaining a visa are not included in the tour price and are the responsibility of the traveler.

Medical Requirements:

Many countries have immunization requirements. Some countries require foreign visitors to have valid medical insurance on entry. Requirements vary by country and can change. Please check with your travel professional or call our office for details on which tours need these requirements.

Specific instructions will be sent to you at 90 days prior to departure if your tour requires these conditions. Mayflower Cruises & Tours cannot be liable for delay or denial of entry due to missing documents.

Itinerary Changes:

There may be times when we may have to alter the scheduled itinerary, cruise vessels, hotels, shore excursions etc. due to weather conditions or conditions on the river in regards to water levels, locks, or other delays. Any changes in the itinerary due to these conditions will not result in eligibility for a refund. All itineraries are subject to change without prior notice and may need to be altered due to water level and other weather conditions.

Cruise Information:

(a) Noise, Vibration and Odor: While We take reasonable steps to minimize noise, vibrations and odors on the cruise ships, You acknowledge and accept that some noise, vibration and intermittent odors may be experienced on vessels and that We will not be liable to You in relation to any such noise, vibration or odors.

(b) Docking Position: During port stops, ships may dock side-by-side, obstructing views and requiring You to pass through other ships to embark and disembark.

The Travel Protection is offered for River Cruises the F431G plan.

DEPOSIT SCHEDULE: Emerald & Scenic River Cruises land/cruise tour price up to \$5,000

Land/Cruise Tour with Air*	Deposit Per Person	Final Payment
• With TPP Coverage	\$899	120 Days
• Without TPP Coverage	\$400	120 Days

Land/Cruise Tour Only	Deposit Per Person	Final Payment
• With TPP Coverage	\$899	120 Days
• Without TPP Coverage	\$400	120 Days

DEPOSIT SCHEDULE: Emerald & Scenic River Cruises land/cruise tour price from \$5,001 and up

Land/Cruise Tour with Air*	Deposit Per Person	Final Payment
• With TPP Coverage	\$969	120 Days
• Without TPP Coverage	\$400	120 Days

Land/Cruise Tour Only	Deposit Per Person	Final Payment
• With TPP Coverage	\$969	120 Days
• Without TPP Coverage	\$400	120 Days

DEPOSIT SCHEDULE: Majestic Mekong River Cruise; Treasures & Temples of Vietnam and Cambodia; Splendors of Europe

Land/Cruise Tour with Air*	Deposit Per Person	Final Payment
• With TPP Coverage	\$969	120 Days
• Without TPP Coverage	\$400	120 Days

Land/Cruise Tour Only	Deposit Per Person	Final Payment
• With TPP Coverage	\$969	120 Days
• Without TPP Coverage	\$400	120 Days

*Land tour price is based on twin occupancy rate

Payment Information: Listed above is a schedule of deposit and final payment due dates. You will note that the first category includes an optional Travelers Protection Plan (TPP). Within five business days of making your reservation, you must make your initial trip deposit. Once your trip deposit is made, you then have 24 hours to add on the Optional TPP if you choose to purchase. Please see "Travelers Protection Plan (TPP)" section in the next column for further explanation of this offering. By placing a deposit, you understand and accept the terms and conditions of Mayflower Cruises and Tours and Scenic Group. For details of the Scenic Group terms please visit <https://www.emeraldcrucises.com/terms-conditions>

Refund and Cancellation Policy: Payments for land, air, and cruise arrangements, (less the deposit amount) will be refunded when cancellations are received prior to the final payment due date noted above. Deposits are non-refundable unless the optional Travel Protection Plan (TPP) is purchased at the time of booking and you have a covered claim. The Refund and Cancellation Policy is offered by Mayflower Cruises and Tours and is separate from the Travel Protection Plan.