



**FREE
AIRFARE**
WITH DEPOSITS RECEIVED
BY 10/31/2022



Jewels of the Rhine and the Glacier Express

the Netherlands • Germany • France • Switzerland

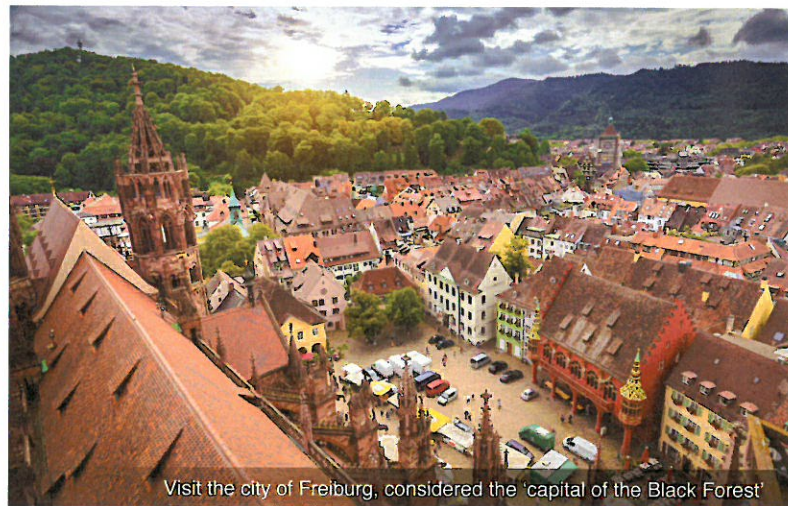
Departure Date: August 6, 2023



Jewels of the Rhine and the Glacier Express



Relax during a glass-top canal cruise through Amsterdam



Visit the city of Freiburg, considered the 'capital of the Black Forest'

DAY 1 Depart the USA: Depart the USA on your overnight flight to Amsterdam, the Netherlands.

DAY 2 Amsterdam, the Netherlands: Welcome to Amsterdam, a fascinating 700-year-old city of picturesque canals, world class museums, theaters and cafés. You will be met and transferred from the airport to your luxurious Emerald Cruises Star-Ship. Become acquainted with the amenities of your ship, or begin exploring the city. This evening, join your fellow travelers for dinner onboard. **Meal: D**

DAY 3 Amsterdam: Experience the city on a cruise aboard a glass-top boat. Traverse the UNESCO World Heritage network of canals, passing Roman patrician and ornate merchant houses from the Dutch Golden Age. Alternatively, join a guided bike tour to Waterland, passing through quintessential Dutch landscapes of quaint villages and windmills. Tonight, enjoy a welcome reception and gala dinner. **Meals: B, L, D**

EmeraldACTIVE: Guided bike tour to Waterland

DAY 4 Cologne, Germany: Cruise along the Rhine River to Cologne. The city is one of Germany's oldest and famous for its magnificent gothic cathedral - a UNESCO World Heritage Site. Join your local guide for an included walking tour of the city, traversing quaint alleyways, seeing historic monuments, and touching on the historical charms of the Old Town. After the tour, journey to a one-of-a-kind farm estate that provides locals with sustainable products. Experience a cooking demonstration and get a glimpse of behind the scenes sustainable farming. **Meals: B, L, D**

DiscoverMORE: Farina Eau de Cologne Museum (additional expense)

EmeraldPLUS: Local farm estate visit with cooking demonstration

DAY 5 Koblenz: Cruise to the 2000-year-old town of Koblenz, situated at the confluence of the Rhine and Moselle Rivers. Enjoy a walking tour of Koblenz seeing the German Corner where the 2 rivers meet, the Church of Our Lady, and visit

the Ehrenbreitstein Fortress by cable car on the opposite side of the river. This fortress was part of the Prussian defense against the French in the 19th century and later used as a headquarters for the American military during WWII. This afternoon, sail through the spectacular UNESCO World Heritage Rhine Gorge. Pass countless medieval castles and vineyards lining the shores of this section of the river, with photo opportunities around every bend. See the infamous Lorelei statue and Pfalzgrafenstein Castle, built on an island in the middle of the river as a medieval toll station. **Meals: B, L, D**

DiscoverMORE: Moselle & Cochem (Reichsburg) Castle Visit (additional expense)

NOTE: You can choose either the included tour of Koblenz OR the DiscoverMORE option, as both tours operate at the same time

DAY 6 Ludwigshafen / Heidelberg: Continue sailing to the town of Ludwigshafen, docking site for Heidelberg. Travel by coach to Heidelberg for a guided visit of the castle ruins and a walk along the cobblestone lanes of the old town. **Meals: B, L, D**

EmeraldACTIVE: Hike from Mount Königstuhl to Heidelberg

DiscoverMORE: Evening concert at Bruchsal Palace (additional expense)

DAY 7 Kehl / Strasbourg, France: Once docked in Kehl, travel by coach across the river to Strasbourg, the capital of the Alsace region in France. Your guided walking tour includes the Grande Île - the historical city center and UNESCO World Heritage Site. Known for its medieval black and white timber-framed buildings, old tanning houses, baroque sandstone buildings, canals and river locks, the city's star attraction is the cathedral, dominating the main square. **Meals: B, L, D**

DiscoverMORE: Tour of Riquewihr (additional expense)

DAY 8 Breisach / Freiburg, Germany: On today's adventure, visit the city of Freiburg, considered the 'capital of the Black Forest'. Aside from seeing the lovely sights, sample true Black Forest delicacies from the lively market in the city center near the main cathedral.



Journey through the Swiss Alps aboard the Glacier Express

Alternatively, join a guided bike tour in Breisach. **Meals: B, L, D**

EmeraldPLUS: Guided tour of Freiburg with market tasting

EmeraldACTIVE: Guided bike tour in Breisach

DAY 9 Basel, Switzerland – Zermatt: After breakfast, disembark the ship in Basel and begin your Swiss adventure. Depart by coach to the mountain resort village of Zermatt for a 2-night stay. **Meal: B**

DAY 10 Zermatt: The charming village is situated at the base of the Matterhorn, which is described as one of the world's most famous mountains. Enjoy a guided walking tour through the car-free zone of this picturesque village and discover its well-preserved original character. This afternoon is at leisure or join the DiscoverMORE cog rail journey to the summit of Gornergrat Mountain at approximately 10,000 feet. **Meal: B**
DiscoverMORE: Gornergrat Matterhorn (additional expense)

DAY 11 Zermatt – Chur – Zurich: The highlight of this program awaits as you venture out on a rail journey through the Swiss Alps aboard the Glacier Express. As you travel aboard the train from Zermatt to the town of Chur, sit back and relax as you traverse the magnificent scenery of the Alps. Disembark the train in Chur and travel by coach to Zurich for an overnight stay. **Meal: B**

DAY 12 Zurich / USA: After breakfast, bid 'auf wiedersehen' to Europe and depart on the transfer to the Zurich airport, taking with you warm memories of your cruise along the Rhine River and journey on the Glacier Express. **Meal: B**

Itinerary is subject to change.

CRUISE AND HOTEL ACCOMMODATIONS

Days 2 through 8 – Aboard an Emerald Cruises Star-Ship

Days 9 and 10 – Resort Hotel Alex or similar, Zermatt, Switzerland

Day 11 – Krone Unterstrass or similar, Zurich, Switzerland

Pre-cruise hotel stays available in Amsterdam. Call for details.



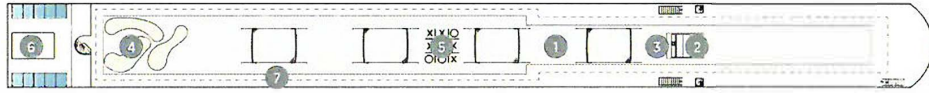
Exceptional Inclusions

- **23 Meals:** 10 breakfasts, 6 lunches and 7 dinners
- **Airport transfers** on tour dates when air is provided by Mayflower Cruises & Tours
- Visit **four countries**
- **Seven-nights in a suite or stateroom** of your choice onboard the vessel
- **First-class service** by an English-speaking crew
- **Onboard Activity Manager** will support all EmeraldACTIVE excursions and host daily onboard wellness activities, games, classes and evening entertainment
- **All gratuities included**
- **Shore excursions** with English-speaking local guides
- Visit **UNESCO World Heritage Sites**
- **Personal listening device** for shore excursions
- **All meals included** onboard
- **Variety of international cuisine**
- Complimentary **regional wines, beer and soft drinks** with onboard lunches and dinners
- Complimentary **bottled water** in your stateroom
- Complimentary **WiFi onboard**
- Complimentary **bicycles onboard** for use ashore
- **All port charges included**
- **Two-night hotel stay and touring in Zermatt**
- Exciting rail experience aboard the **Glacier Express**
- **Tour and overnight in Zurich**

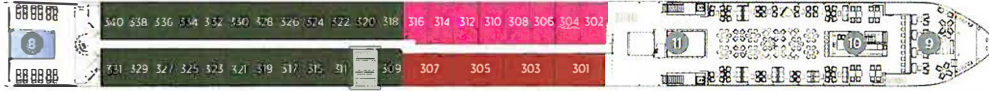
Emerald Cruises Star-Ships

Built: 2014-20 **Speed:** 15.5 mph **Staterooms:** 19 **Suites:** 72 **Length:** 443 ft. **Crew:** 47

SUN DECK



HORIZON DECK



VISTA DECK

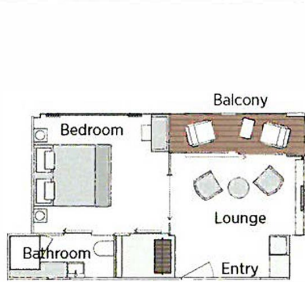


RIVIERA DECK



Public Areas and Ship Amenities

- 1 Sun Deck with Deck Chairs
- 2 Navigation Bridge
- 3 Sky Barbeque
- 4 Golf Putting Green
- 5 Games Area
- 6 Retractable Glass Roof
- 7 Walking Track
- 8 Daytime Pool / Evening Cinema
- 9 The Terrace
- 10 Horizon Bar and Lounge
- 11 Elevator
- 12 Reception
- 13 Wellness Area
- 14 Fitness Area
- 15 Reflections Restaurant



Owner's One-Bedroom Suite

315ft²

CAT SA



Grand Balcony Suite

210ft²

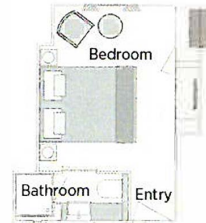
CAT S



Panorama Balcony Suite

180ft²

CAT A CAT B CAT C



Emerald Stateroom

162ft²

CAT D CAT E

Jewels of the Rhine and the Glacier Express River Cruise

		AUGUST 6, 2023		
CAT	STATEROOM / SUITE	DECK	PER PERSON TWIN	SINGLE ROOM ADD
E	Emerald Stateroom	Riviera	\$4,845	\$3,395
D	Emerald Stateroom	Riviera	\$5,145	\$3,600
C	Panorama Balcony Suite	Vista	\$5,795	\$4,060
B	Panorama Balcony Suite	Vista	\$5,970	\$4,180
A	Panorama Balcony Suite	Horizon	\$6,095	\$4,270
S	Grand Balcony Suite	Horizon	\$6,745	N/A
SA	Owner's One-Bedroom Suite	Horizon	\$7,645	N/A

Free Air from HIA with deposits received by October 31, 2022, land/cruise

Travelers Protection Plan (TPP) for River Cruises - \$569 per person (optional)

This nonrefundable fee will provide a refund to you during the instance that you have to cancel your trip. The cancellation has to be for a covered reason (see Plan for details on coverage) and we have to be notified at least one day prior to departure. If you must leave the tour early due to personal illness or the illness or death of an immediate family member, TPP will provide a refund for any unused services after the departure of the tour. Other benefits include medical expenses for illness and injury, emergency transportation, 24 hour hot line and lost or stolen baggage assistance. Return air transportation is included ONLY if your air tickets are purchased through Mayflower Cruises & Tours. Please review the Plan for details on coverage. Should you choose not to purchase our TPP, the following per person cancellation charges will be assessed for all tours and optional excursion costs:

- 91 days or more prior to departure: Deposit Amount
- 90 days to day of departure: 100% of total tour
- No refund on unused portions of the tour



Exclusions: Mayflower Cruises & Tours reserves the right to alter its Refund and Cancellation Policy when a substantial amount of cancellation or postponement of travel is attributable to: conditions resulting from an act of God, natural or man-made disaster, fire, government action, civil disorder, war, hostilities between nations, or unavailability of transportation through no fault of Mayflower Cruises & Tours. *Plan and benefits offered and administered by Trip Mate, Inc.*

(a) The State Employees Recreation Association, its officers, directors, representatives and members, expressly disclaims all responsibility or liability of any nature whatsoever for loss, damage or injury to property or to the person due to any cause whatsoever, occurring during or attributable to the tour, or tours, described herein and purchaser/participant by his or her subscription to or participation in the travel opportunity, does release SERA from such liability or responsibility. Without limiting the foregoing, SERA is not and shall not become liable or responsible for accidents, loss detention, annoyance, delays and expenses arising from quarantine, strikes, force majeure, failure of any means of conveyance to arrive or depart as scheduled, disturbances, government restrictions or regulations, discontinuances or change in transit or hotel accommodations and/or services and other causes over which they have no control. The passage contract in use by the airlines concerned, when issued, shall constitute the sole contract between the airlines and the purchaser and/or participants of this tour. SERA is not responsible, and the Purchaser and/or participant waives all claim against SERA for all of the aforesaid conditions as well as loss or damage resulting from delays, cancellations or substitutions of equipment, financial conditions, or any act, omission, negligence, or any other faults by the travel agent, carriers, hotel or any other transportation or service providers or companies, their agents, servants, employees and subcontractors or other causes. In the event that, in the opinion of SERA, it becomes necessary or advisable for the comfort and/or well being of the passengers, or for any reason whatsoever, to alter the itinerary of this tour, including the airline and type of equipment, accommodations and/or service utilized, SERA reserves the right to do so at its sole discretion and without notice. SERA is a non-profit organization, comprised of volunteers, for the benefit of all Commonwealth employees, active or retired, their relatives and friends. It is solely responsible for its own affairs and completely independent of the Commonwealth of Pennsylvania State Government.

(b) Assistance: Tour participants requiring assistance or accommodation for disabilities should contact the travel agency to discuss your specific requirements and what accommodation is possible.

FOR RESERVATIONS OR INFORMATION CONTACT:

Cyndi Page cypage@pa.gov

SERA

P. O. Box 458

Harrisburg, PA 17108-0458